



Access from OSAKA, KYOTO, KOBE & HIMEJI



From OSAKA or KOBE - about 2h 40mins
From KYOTO - about 2h 30mins
From HIMEJI - about 1h 45mins



From OSAKA - about 3h 20mins
From KOBE - about 3h 10mins



From OSAKA - about 3h 30mins
From KYOTO or KOBE - about 3h
From HIMEJI - about 2h

Contact Us



Toyooka Tourism Innovation

TEL +81-796-21-9002 FAX +81-796-21-9113

<https://toyooka-tourism.com/>

Issue date - July 2018



KANNABE HIGHLANDS

KANNABE HIGHLANDS

The best place to enjoy forest bathing while watching the beautiful Waterfall.

UP KANNABE Ski Resort



Welcome to
KANNABE HIGHLANDS
wonderfuyu!!

Kannabe Highland is located in Hidaka Cho, Toyooka City, Hyogo Prefecture. In winter you can enjoy snow plays by using snowshoes, banana boats and so on as well as enjoying walking snow mountains, as skiing and snowboarding. In the summer you can enjoy activities with a variety of menus including tennis, golf, paragliding and camping. In spring and autumn, mountain streams and waterfalls are beautiful around the highland surrounded by the 1,000-meter high mountains, and there is also a valley optimal for hiking.

Exhibition of recorded images of accessories and adventure line of the world famous adventurer, Mr. Naomi Uemura.



Uemura Naomi Memorial Museum

Museum introducing the history of Tajima Province.

Toyooka Municipal History Museum
Tajima Province Administration
Kokubunji Pavilion

Limited Express
Bus Stop

Ebara Station
Toyooka City Chamber of Commerce

JR San-in Line

Kita Kinki
Toyooka Expressway

HIDAKA TOWN

Uemura Naomi Memorial Hall Sports Park

Ryukokuji Temple

Jugo International Rainbow Trout Fishery

Jugo waterfall

"Yunohara" Hot Spring Auto Camp Site

Ase Valley

Manba Ski Resort

Blue Ridge Hotel

Up Kannabe Ski Resort

Kannabe Hot Spring
"Yutorogi"

Tajima Dome

Hattan Waterfall

MANBA Ski Resort



OKUKAN Ski Resort



Enjoy the Kannabe

Snow Activity

KANNABE HIGHLANDS



UP KANNABE

Mountain ski area where kids and beginners can also enjoy! Ski slopes for beginners with high degree of satisfaction!

1 DAY TICKET PRICES

SPECIAL DISCOUNT PRICE

ADULTS	3,500 yen (Available only on weekdays M-F)
CHILDREN	2,500 yen (Available only on Saturdays)
SENIORS	2,500 yen (Available only on Saturdays)

REGULAR PRICE

ADULTS	4,500 yen (on Sat, Sun and holidays)
CHILDREN	3,000 yen (on weekdays, Sun and holidays)
SENIORS	3,000 yen (on weekdays, Sun and holidays)

※ ADULTS(Age: 16+) / CHILDREN (Age: 13-16)
SENIORS (Age: 60+ YOUNG CHILDREN (Age: 4-12))

UP Kannabe Co. Ltd

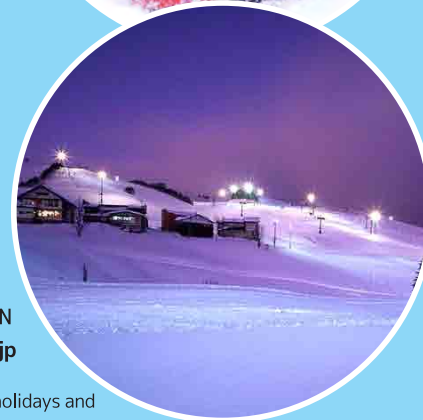
Tada/Kurisuno, Hidaka cho, Toyooka City, Hyogo, JAPAN

TEL +81-796-45-1545 www.kannabe.co.jp

Lift/Single 1 unit/3 pairs/Triple 1 unit/Quad 1 unit
Parking lot/Free of charge except weekends, national holidays and New-year holidays



Sliding sled



Night slope



OKUKAN ← Link slope → MANBA



OKUKAN

Powder snow seen at a nice weather day! Abundant variation of slopes!

1 DAY TICKET PRICES

REGULAR TICKET	
ADULTS	4,500 yen
CHILDREN/SENIORS	3,500 yen
YOUNG CHILDREN	2,500 yen

HALF DAY TICKET (4 HOURS)

ADULTS	3,500 yen
CHILDREN/SENIORS	3,000 yen
YOUNG CHILDREN	-

※ ADULTS(Age: 16+) / CHILDREN (Age: 13-16)
SENIORS (Age: 60+ YOUNG CHILDREN (Age: 4-12))

Oku Kannabe Co., Ltd.

710, Yamata, Hidaka cho, Toyooka City, Hyogo, JAPAN

TEL +81-796-45-0510 www.okukan.com

Single 1 unit/ 7 pairs/ Triple 1 unit/ Quad 1 unit
Parking lot/ Free of charge except weekends, national holidays
and New-year holidays



Snowshoe



Snowboard



MANBA

Beginners can slip safely!
Ski slope condition!

1 DAY TICKET PRICES

REGULAR TICKET	
ADULTS	4,500 yen
CHILDREN/SENIORS	3,500 yen
YOUNG CHILDREN	2,500 yen

HALF DAY TICKET (4 HOURS)

ADULTS	3,500 yen
CHILDREN/SENIORS	3,000 yen
YOUNG CHILDREN	-

※ ADULTS(Age: 16+) / CHILDREN (Age: 13-16)
SENIORS (Age: 60+ YOUNG CHILDREN (Age: 4-12))

Manba Co. Ltd

480, Manba, Hidaka cho, Toyooka City, Hyogo, JAPAN

TEL +81-796-45-0191 www.manba-ski.jp

4 lifts / pair
Parking lot/ Free of charge except weekends, national holidays
and New-year holidays



Manba Gelande



Ski and Snowboard

Stay HOTEL and INN KANNABE HIGHLANDS



There are Japanese style accommodation facilities in the Kannabe Highland where Japanese people are usually staying, called "Minshuku" in Japanese. In this place, you can enjoy a friendly conversation with the owner of the inn and his wife. You can learn about Japanese culture and the nature of the Kannabe Highland. Guest houses and pensions as well as western style rooms with beds are available, too. Please enjoy your time in the style of your choice.



Kannabe Highland Hotel
1, Tada, Hidaka cho, Toyooka City
TEL +81-796-45-0321
Accommodation cost/
1 night 2 meals 11,000 yen~ per night



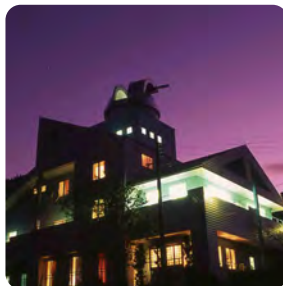
Gonbei
13, Nashiki, Hidaka cho, Toyooka City
TEL +81-796-45-0249
Accommodation costs/
1 night 2 meals 7,500 yen~ per night



Shinya
1572, Nashiki, Hidaka cho, Toyooka City
TEL +81-796-45-0028
Accommodation costs/
1 night 2 meals 7,600 yen~ per night



Guest House AMIGO
1230, Nashiki, Hidaka cho, Toyooka City
TEL +81-796-21-1230
Accommodation cost/
1 night 2 meals 6,000 yen~ per night



Auberge Albireo Observatory
147-1, Yamata, Hidaka cho, Toyooka City
TEL +81-796-45-1066
Accommodation cost/
1 night 2 meals 11,900 yen~ per night



Kannabesansou
1-1, Tada, Hidaka cho, Toyooka City
TEL +81-796-45-0101
Accommodation cost/
1 night 2 meals 9,800 yen~ per night



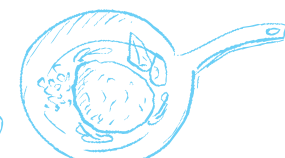
Kougentei
180-1, Nashiki, Hidaka cho, Toyooka City
TEL +81-796-45-0174
Accommodation cost/
1 night 2 meals 7,500 yen~ per night



Nashikisou
102, Nashiki, Hidaka cho, Toyooka City
TEL +81-796-45-0569
Accommodation cost/
1 night 2 meals 7,500 yen~ per night



Cuisine LOCAL DINING KANNABE HIGHLANDS



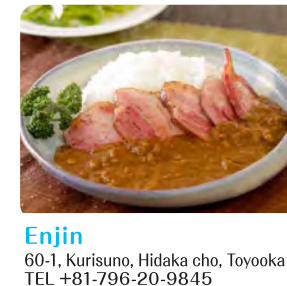
There are plenty of shops where you can enjoy dishes using local ingredients at Kannabe Highland. You can choose among variety of Japanese and Western dishes cooked using vegetables such as wild vegetables and fish, French cuisine, lunches according to your budget and preference. Lunch buffet is also available, so please enjoy your lunch as well. We hope you will enjoy the pleasure of the Kannabe Highland.



Waraku
1348-1, Tada, Hidaka cho, Toyooka City
TEL +81-796-45-0101
<http://www.kannabe-waraku.com>
Food cooked with special attention to the ingredients and handmade cooking, such as seasonal vegetables that can be harvested in mountains and fish caught in beautiful rivers, surrounded by rich mountains.



Albireo
147-1, Yamata, Hidaka cho, Toyooka City
TEL +81-796-45-1066
<http://www.hotel-albireo.com>
We will offer French cuisine with plenty of vegetables and locally sourced ingredients in the restaurant's field.



Enjin
60-1, Kurisuno, Hidaka cho, Toyooka City
TEL +81-796-20-9845
<http://enjin-kannabe.co.jp>
Thinking about having lunch at the smoked workshop cafeteria in the smoky room? We hope you will relax in this place while reading



Michinoeki Kannabekogen
59-13, Kurisuno, Hidaka cho, Toyooka City
TEL +81-796-45-1331
<http://michinoeki-kannabe.com>
Due to the wide variety of products from set menu to single item menus we can respond to different needs of our guests including families and large group of people. Here you can enjoy "lunch buffet" using fresh ingredients raised locally, seasonal vegetables on Saturdays, Sundays and public holidays.



Bosk
1330-1, Nashiki, Hidaka cho, Toyooka City
TEL +81-796-45-0722
You can enjoy an organic lunch with organic ingredients and locally sourced vegetables. Please try experiencing a stylish space with foods that are friendly to your body and mind



Suehiro
1515-1, Nashiki, Hidaka cho, Toyooka City
TEL +81-796-45-1121
Taste huge volume of lunch at 540 yen! The menu is sure to be full with pork cutlets and meat



Lawson
1169-1, Nashiki, Hidaka cho, Toyooka City
TEL +81-796-45-1888
If you are looking for a convenience store at Kannabe Highland, please come here to LAWSON. You can find plenty of sweets with lunch boxes, rice balls, bread, etc. Different types of alcohol, snacks and drinks are also available



Blue ridge hotel
55, Kurisuno, Hidaka cho, Toyooka City
TEL +81-796-45-1200
<http://www.blridge.jp>
Here you can enjoy Japanese cuisine for lunch at a trendy hotel being proud of its dishes that made use of seasonal ingredients depending on the season. Their appearance is very fresh. You can take pictures and keep them to make memories of your trip.



カンナベ高原
KANNABE HIGHLANDS
Wonder Fuyu!

Enjoy the Kannabe

Summer Activity KANNABE HIGHLANDS

Surrounded by rich nature, the Kannabe Highland offers a variety of outdoor activities throughout the year making you even wonder which one would be better to experience! Enjoy a variety of experiences such as camping and climbing/trekking.



Hot air balloon

Tel +81-796-45-1545

Take off from the top of Kannabe! You can enjoy the same view as a bird. Of course, "It is priceless that the remains of the crater remains so beautifully". You can see the crater of Mt. Kannabe from the sky.

Child (elementary school student or younger) 1,800 yen, Adult 2,900 yen

Experience time / About 5 minutes

start time / AM 7:00 ~ PM 5:30 (2 flights in the morning and evening only)



Kannabe lava-flow trekking

Let's walk on the "Kannabe lava flow" created by the Kannabe volcano group. Scraping the rocks from the lava flowing from Kannabe volcano and the constant stream of water in Inaba River. We have made a wonderful landscape by making waterfalls and deep waters.

4,500 yen per person (Same amount for adults and children)

Time / 2 to 3 hours timing / From March to November

Can be used even during rain!



Plastic skiing

This is a popular activity among children and adults descending from spacious courses.

Child (Under 15) 2,000 yen, Adult 3,000 yen

Hours / Saturdays, Sundays, Holidays / May - October

Rainy weather is impossible



Forest adventure

Being in an unusual space in the great nature which you cannot usually see. Beautiful scenery seen from 14 m above the ground; cedar and cypress trees aged 130 to 150 years. You can see it during the adventure. Participants / from 8 people ~

3,600 yen per person (Same amount for adults and children)

Experience time / 2 hours 30 minutes to 3 hours time

/ From March to November Available even at rainy weather!

Tourism KANNABE HIGHLANDS

Let's sightsee!

Tourist information

A lot of fun places around the Kannabe Highland! Introducing a glimpse of the spot where you can go if you drive a little.



UEMURA NAOMI MEMORIAL MUSEUM

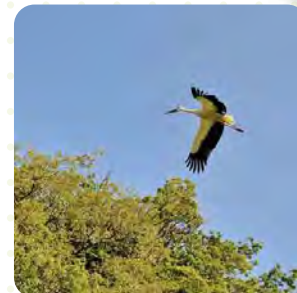
*A facility that honors Naomi Uemura, a world-renowned adventurer who has won the National Honor Award. A straight aisle that covers about 200 meters in the background of the surrounding mountain ranges, representing crevasses that cut through the ground and imagining snow caves with passage as the main axis. It is equipped with exhibition room and video hall. There is also a sports park.

785, Ibu, Hidaka cho, Toyooka City

TEL +81-796-44-1515

Business hours / 9:00~17:00

Holiday / Wednesday



Hyogo Park of Oriental White Stork

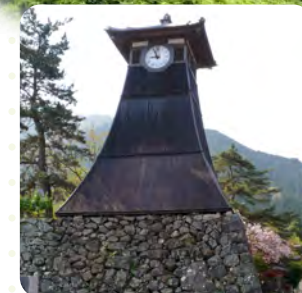
A facility that tackles protection, multiplication, and wild reversion of the country's Special Natural Monuments. In the open area in the park, not only can you observe breeding storks, but also you can walk slowly through the village mountain landscape.

128, Nikadani, Shounji, Toyooka City

TEL +81-796-23-5666

Business hours / 9:00~17:00

Closed / Monday



A CASTLE TOWN IZUSHI

Tajima's small Kyoto which is said to be discovered by the goddess of Tajima development "Sun spirit (Amenohibako)" which also appears in "Kojiki", "Nihon Shoki". "Izushi soba" - a dish which is familiar as a soul food representing Tajima served in small dishes.

[Tajimanokuni Izushi Tourist Association]

104-7, Uchi-machi, Izushi cho, Toyooka City

TEL +81-796-52-4806

Business hours / 9:00~17:00



KINOSAKI ONSEN

A hot spring resort representing Kansai, loved by many writers and artists. Taiko bridge and shallow trees of stone buildings along the Otanigawa River which flows through the center. There is a feeling of old-fashioned moist hot water town. Please enjoy your time in the outdoor hot spring bathes wearing cotton kimono "Yukata" and Japanese traditional sandals "Geta".

[Kinosaki Hot Spring Tourist Association]

357-1 Yushima, Kinosaki cho, Toyooka City

TEL +81-796-32-3663

Business hours / 9:00~17:00



GENBUDO PARK

When the lava flowing out by the volcanic activity that occurred 1.6 million years ago cools and hardens, it produced regular fissures, which are formed from a total of five caves.

[Genbudo Guide Club]

1339, Akaishi, Toyooka City

TEL +81-90-1501-0335



TAKENO BEACH

Takenohama Beach is a beach facing the Japan Sea side of Hyogo Prefecture, and the Nekozaki Peninsula on the west side. One of the best scenic spots on the San-in Coast you can hope for. A fine white sandy texture that lasts about 1 km. The beach has also been selected for "Hundred Pure Water Baths" and "Japan's Hundred Most Beautiful Beaches".

[Takeno Tourist Association]

17-22, Takeno, Takeno cho, Toyooka City

TEL +81-796-47-1080

Business hours / 9:00~17:00